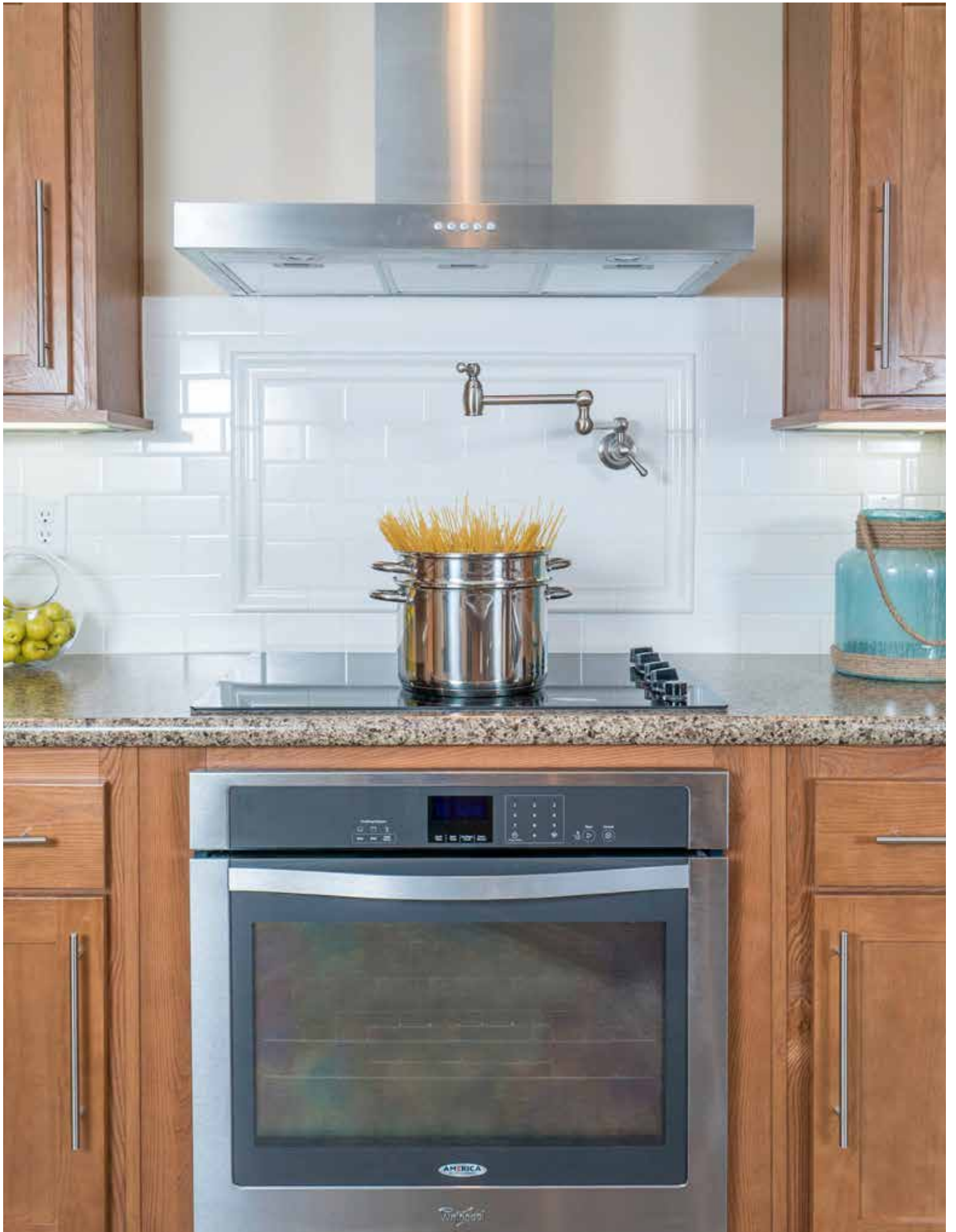


MULTI-SECTION ESSENTIALS COLLECTION



ATLANTIC[®]
HOMES



MADE FOR LIVING

A heritage of excellence.

Atlantic Homes has been providing families with quality homes for generations. With a unique combination of state-of-the-art manufacturing and high-quality building materials, we provide the highest value in housing. We have earned our reputation by consistently delivering more than our customers might expect. More innovative quality features. More home styles. More flexible floor plan designs. More helpful customer service. And, most of all, more home for the money.

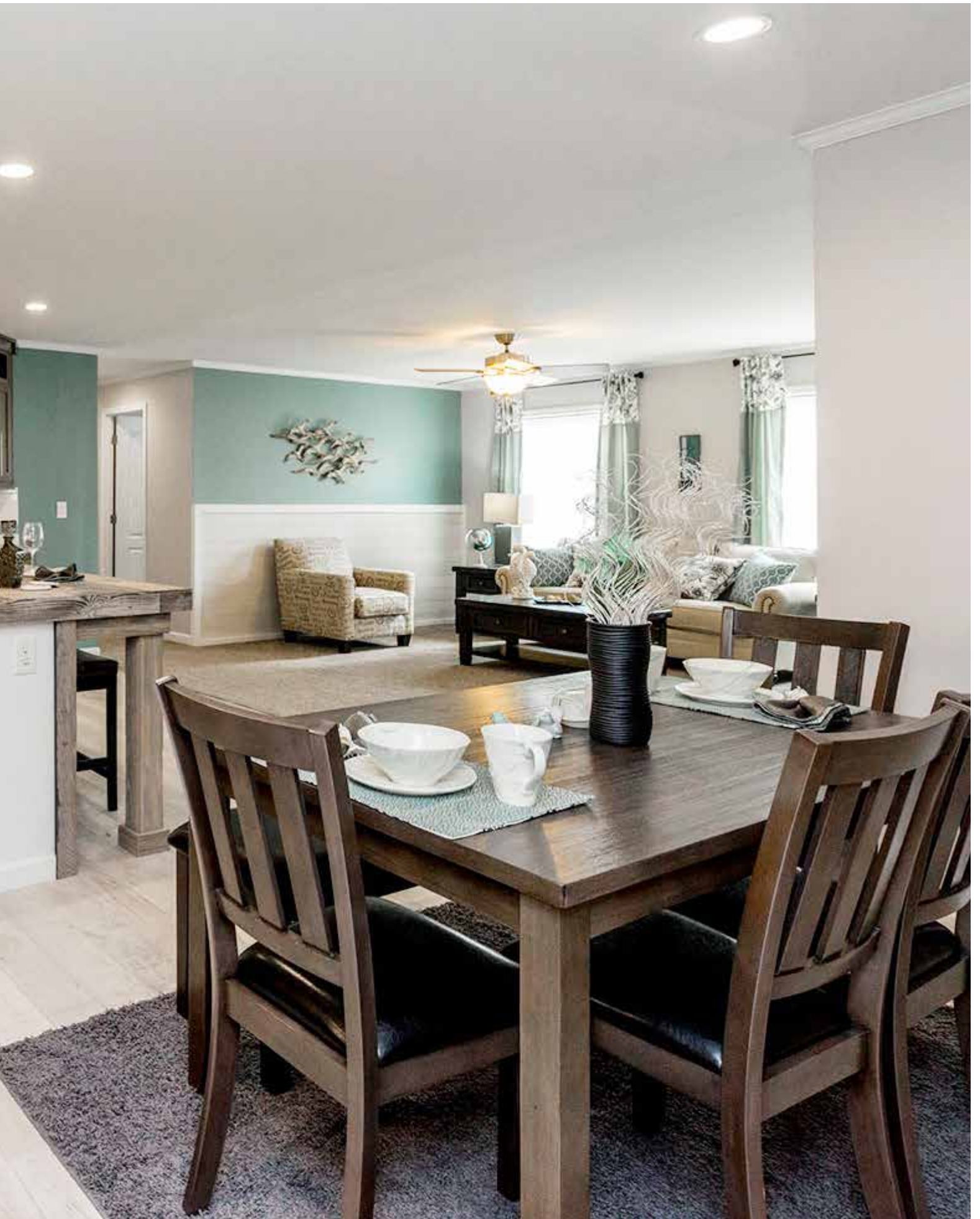
For you. For life.

Beyond just building you a house, we're committed to providing you and your family with a home to make memories in that will last a lifetime. Somewhere you can feel secure. A place you can call your own. A home that fits your lifestyle and has your own personal touch. Whether you're an active young family constantly on the go or empty-nesters ready to simplify, just relax – we have a home that's right for you.

Lifestyle. Choice.

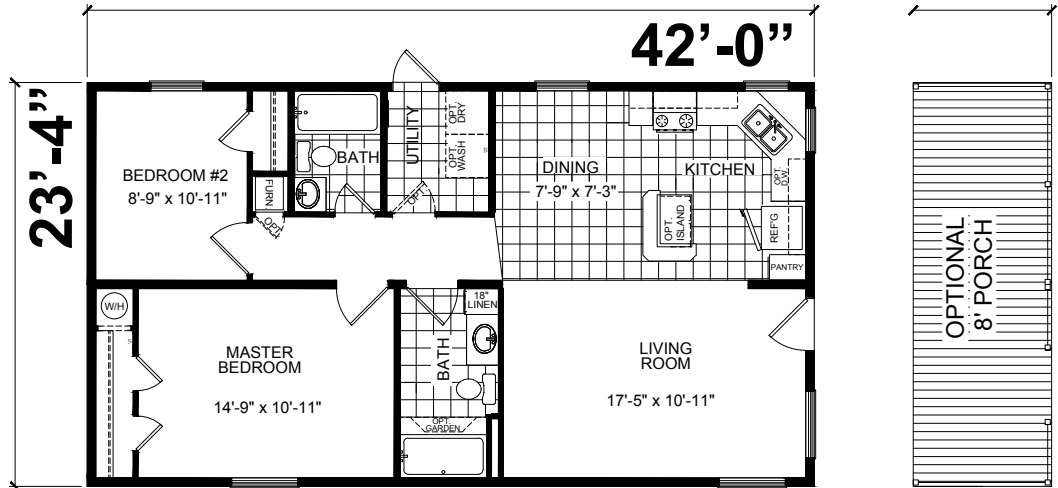
Our vast selection of floor plans, color choices and options give you the freedom to express your personal style and fit your home around your life.





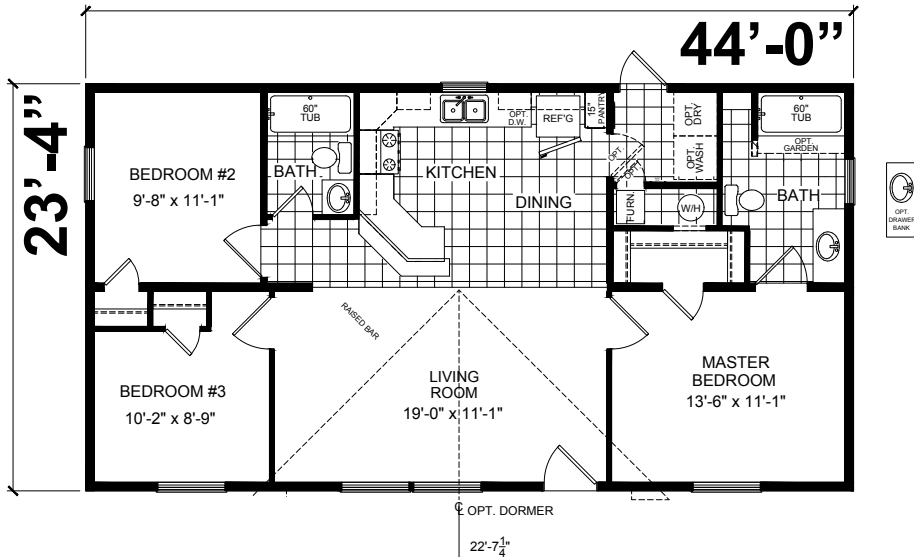
B-24201

23'-4" x 42'
2 bed-2 bath
980 sq. ft.



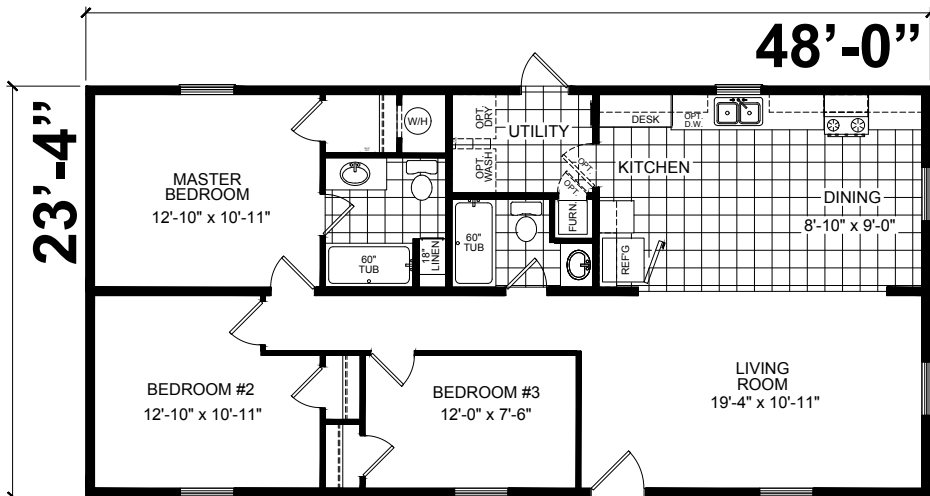
B-24401

23'-4" x 44'
3 bed-2 bath
1027 sq. ft.



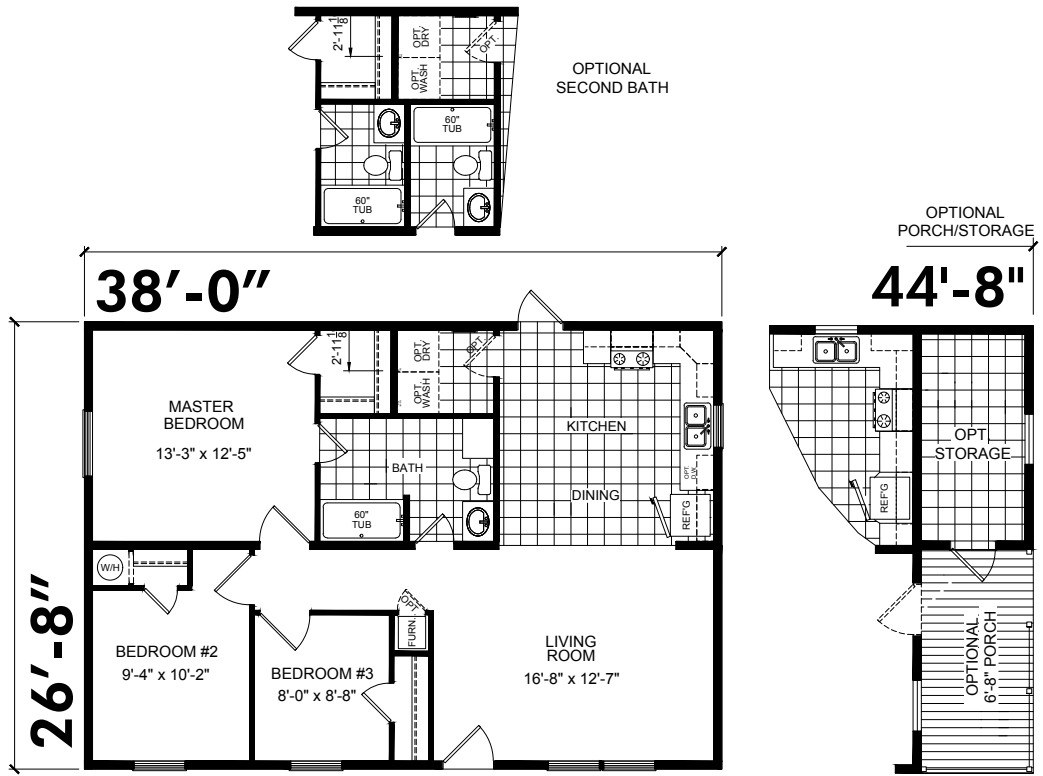
B-24803

23'-4" x 48'
3 bed-2 bath
1120 sq. ft.



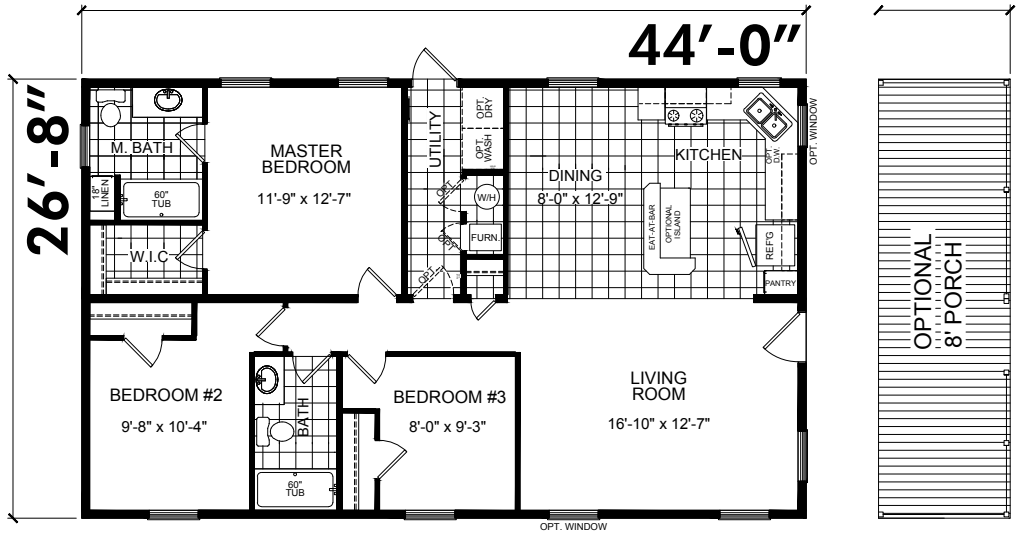
A-23801

26'-8" x 38'
3 bed-1 bath
1013 sq. ft.



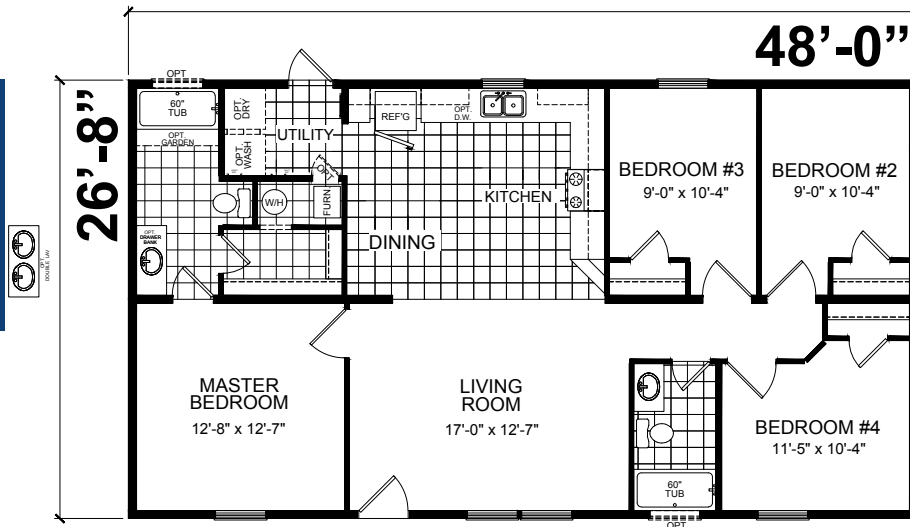
A-24403

26'-8" x 44'
3 bed-2 bath
1173 sq. ft.



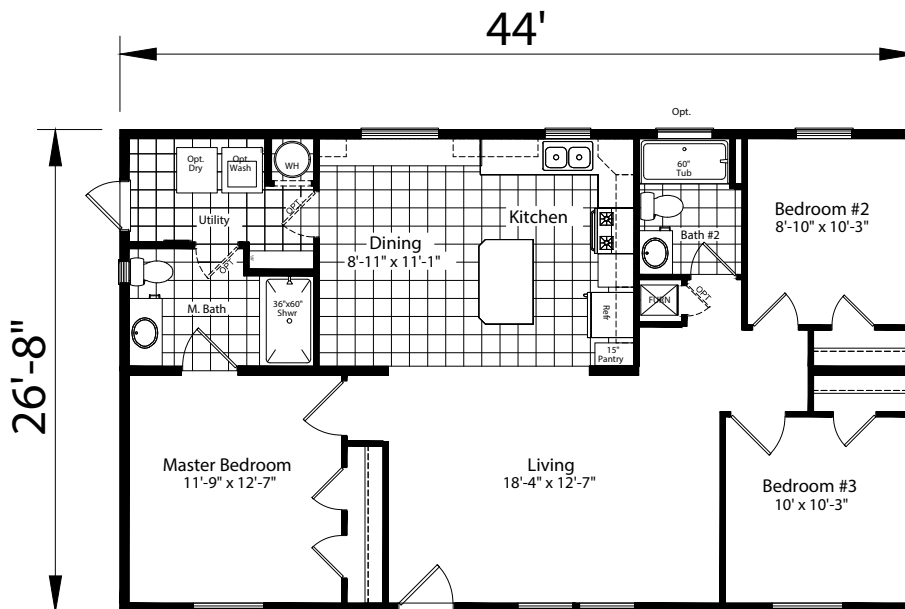
A-24808

26'-8" x 48'
4 bed-2 bath
1280 sq. ft.



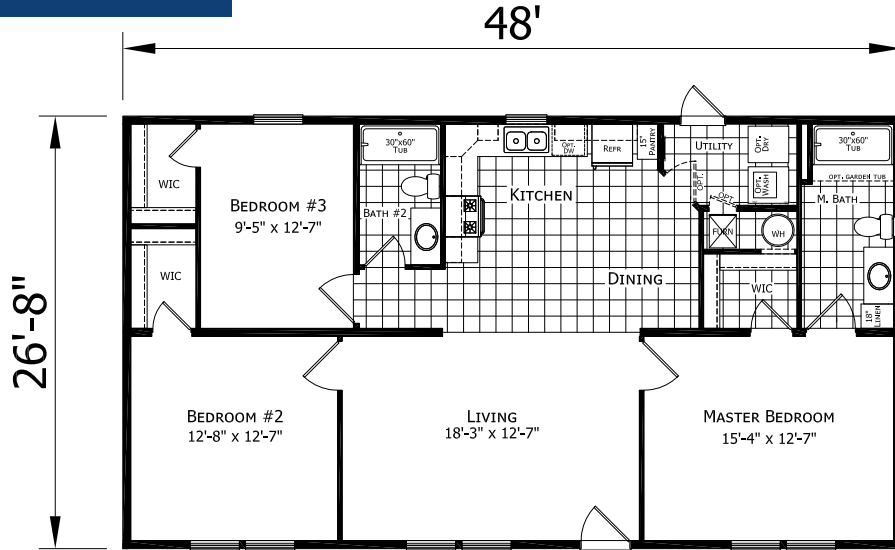
A-24402

26'-8" x 44'
3 bed-2 bath
1173 sq. ft.



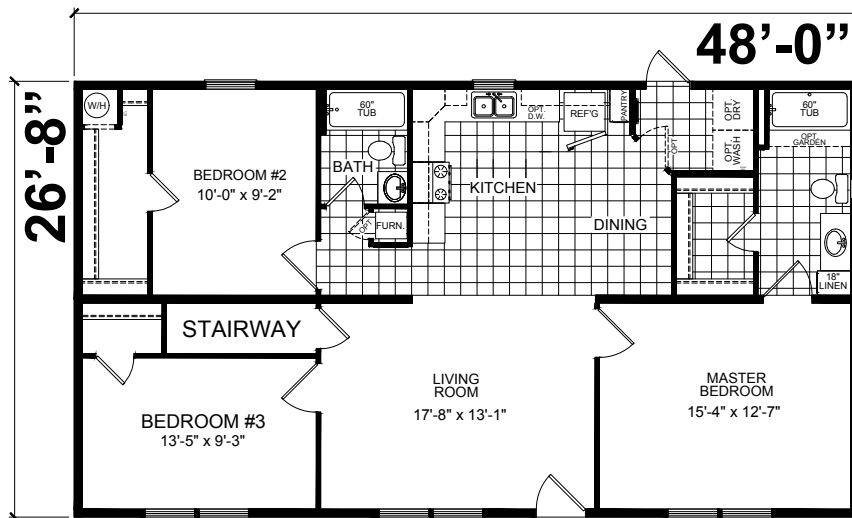
A-24807

26'-8" x 48'
3 bed-2 bath
1280 sq. ft.



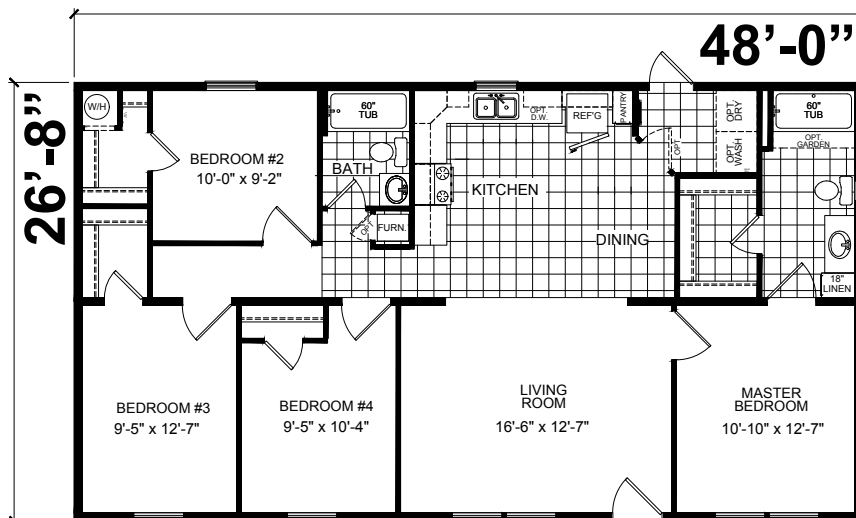
STAIRWELL OPTION

26'-8" x 48'
3 bed-2 bath
1280 sq. ft.



4 BED OPTION

26'-8" x 48'
4 bed-2 bath
1280 sq. ft.

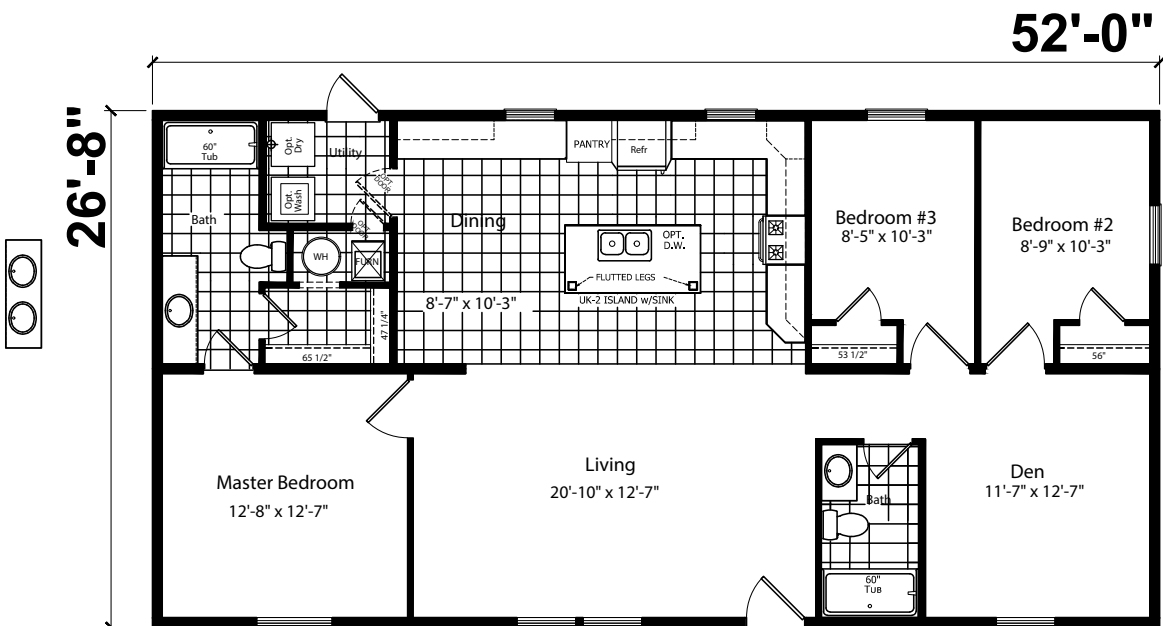


A-25002



A-25211

26'-8" x 52'
3 bed-2 bath
1386 sq. ft.

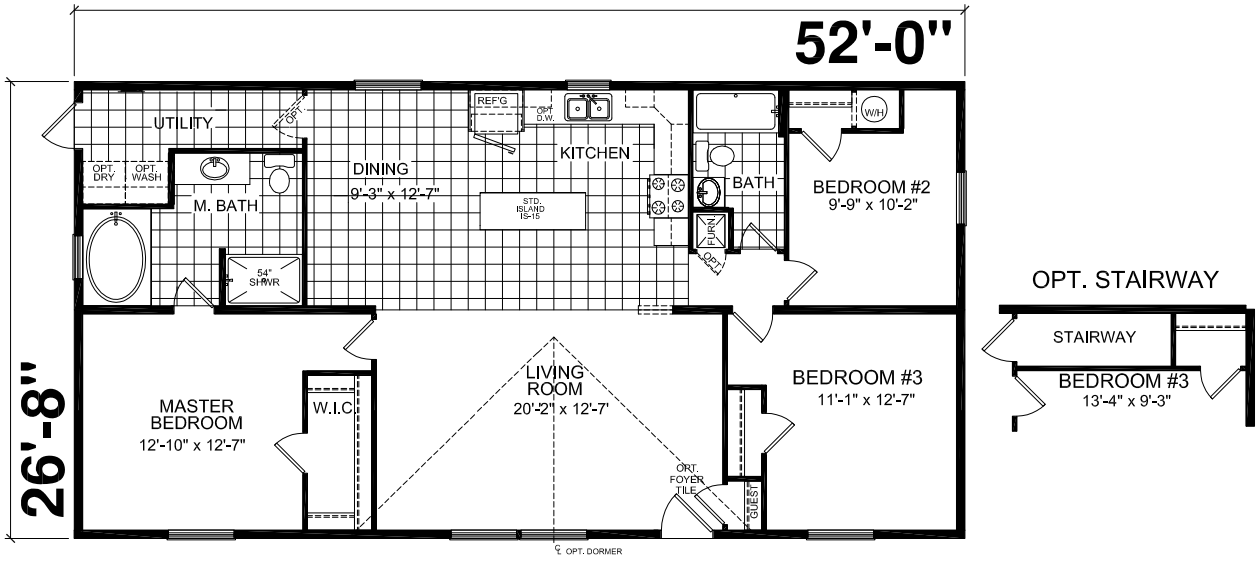


A-25211



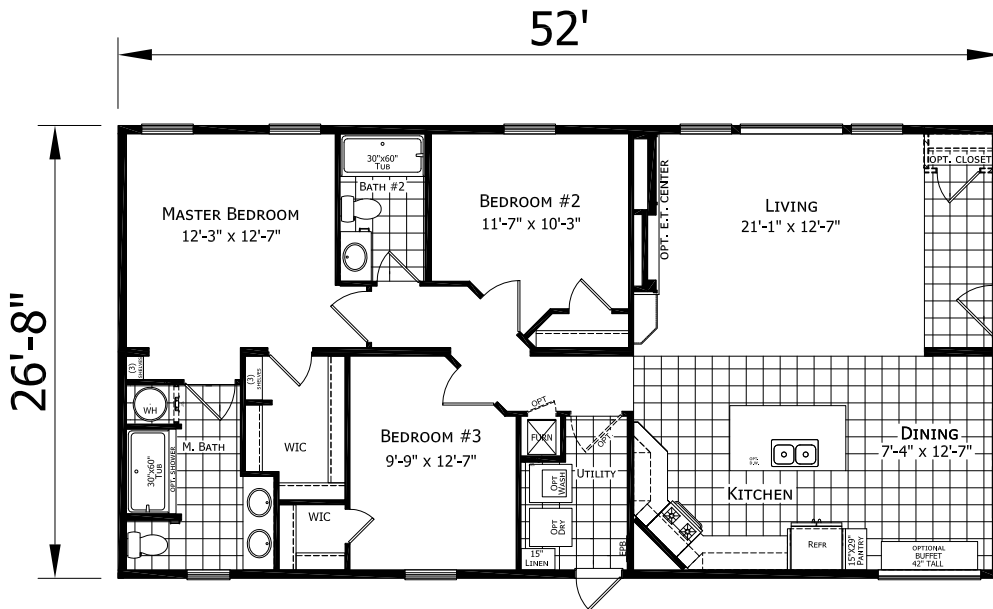
A-75252

26'-8" x 52'
3 bed-2 bath
1387 sq. ft.



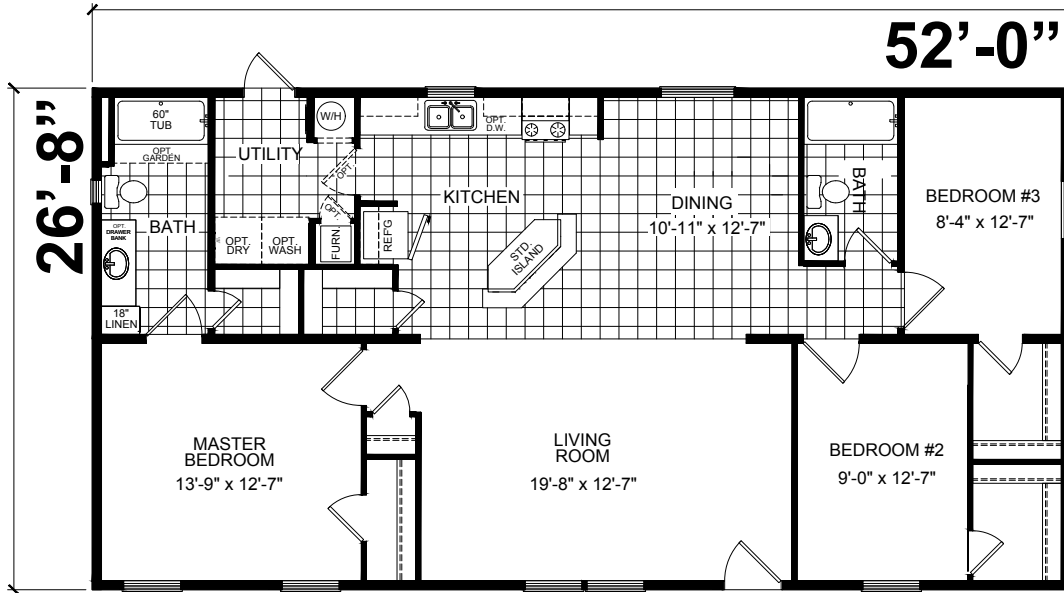
A-25216

26'-8" x 52'
3 bed-2 bath
1493 sq. ft.



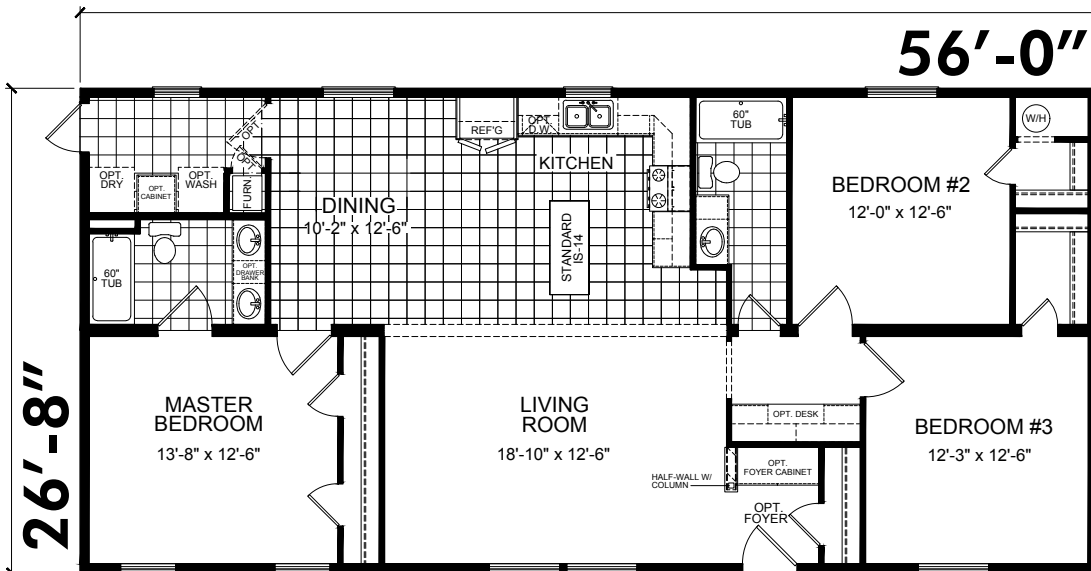
A-25204

26'-8" x 52'
3 bed-2 bath
1387 sq. ft.



A-75652

26'-8" x 56'
3 bed-2 bath
1493 sq. ft.

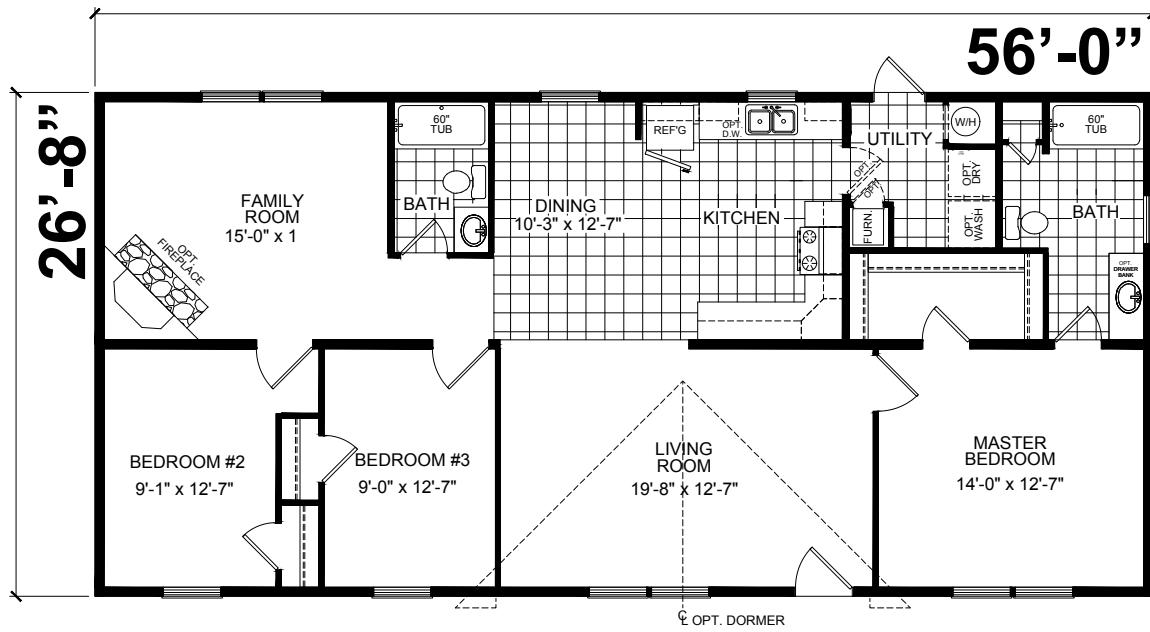


A25601

26'-8" x 56'
3 bed-2 bath
1493 sq. ft.

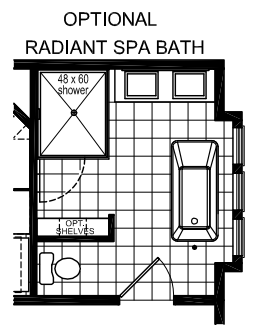


Shown with Site-built Garage by Others



A-25609

26'-8" x 56'
3 bed-2 bath
1493 sq. ft.

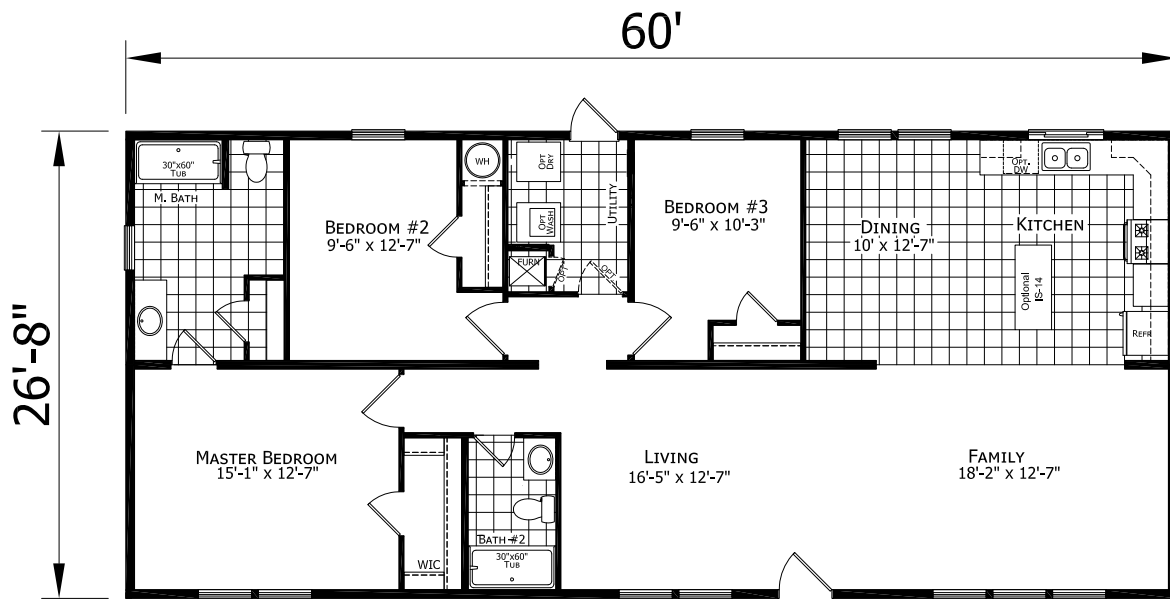


A-26006

26'-8" x 60'
3 bed-2 bath
1600 sq. ft.



Shown with Site-built Garage by Others

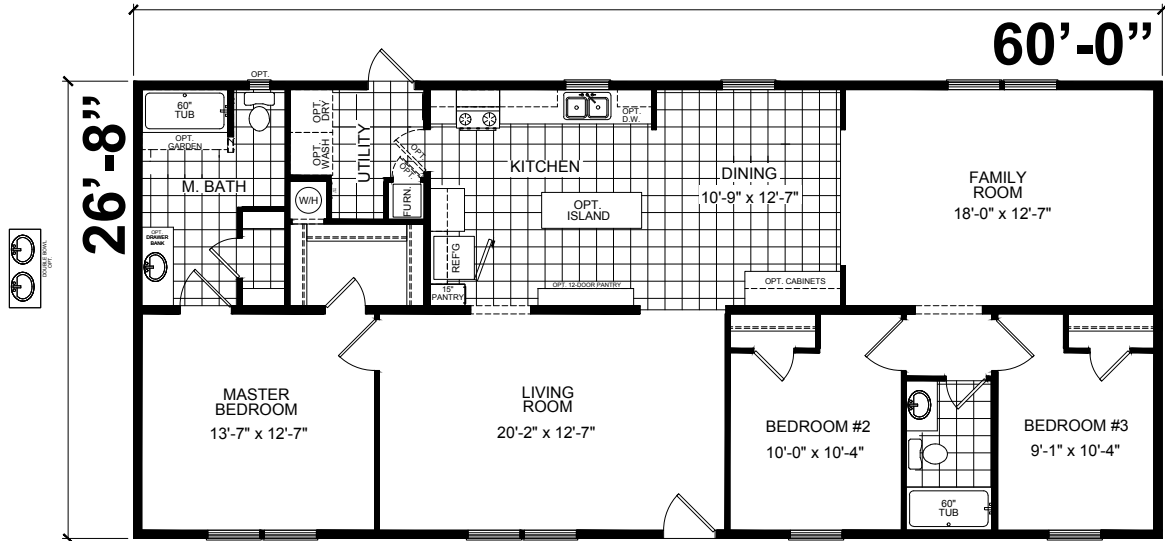


A-26006



A-26003

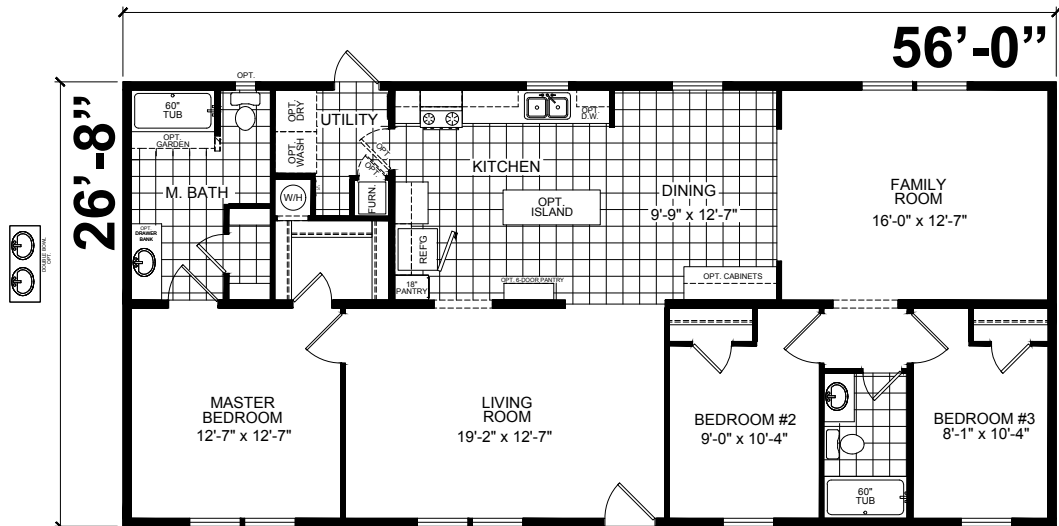
26'-8" x 60'
3 bed-2 bath
1600 sq. ft.



56'

OPTION

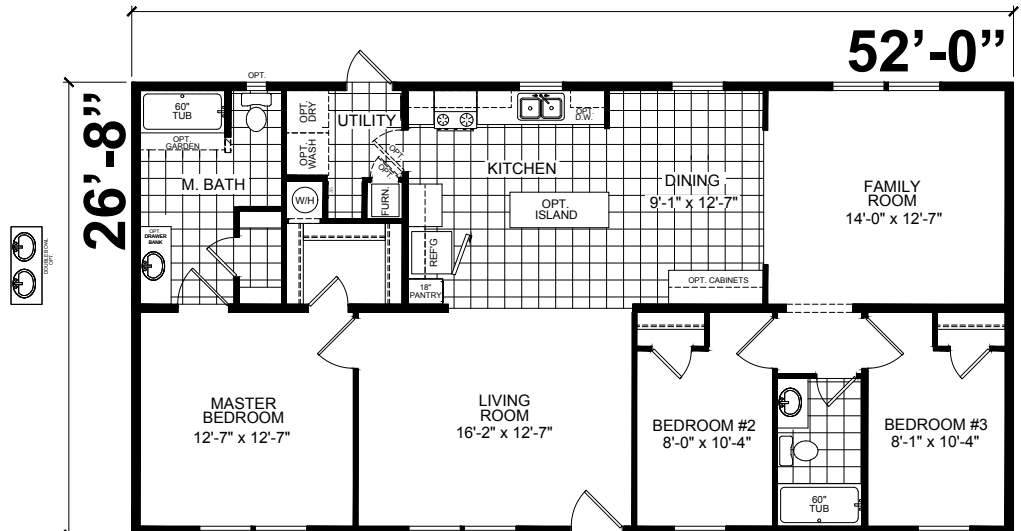
26-8" x 56'
3 bed-2 bath
1493 sq. ft.



52'

OPTION

26-8" x 52'
3 bed-2 bath
1387 sq. ft.



A-26402

26'-8" x 64'
3 bed-2 bath
1707 sq. ft.

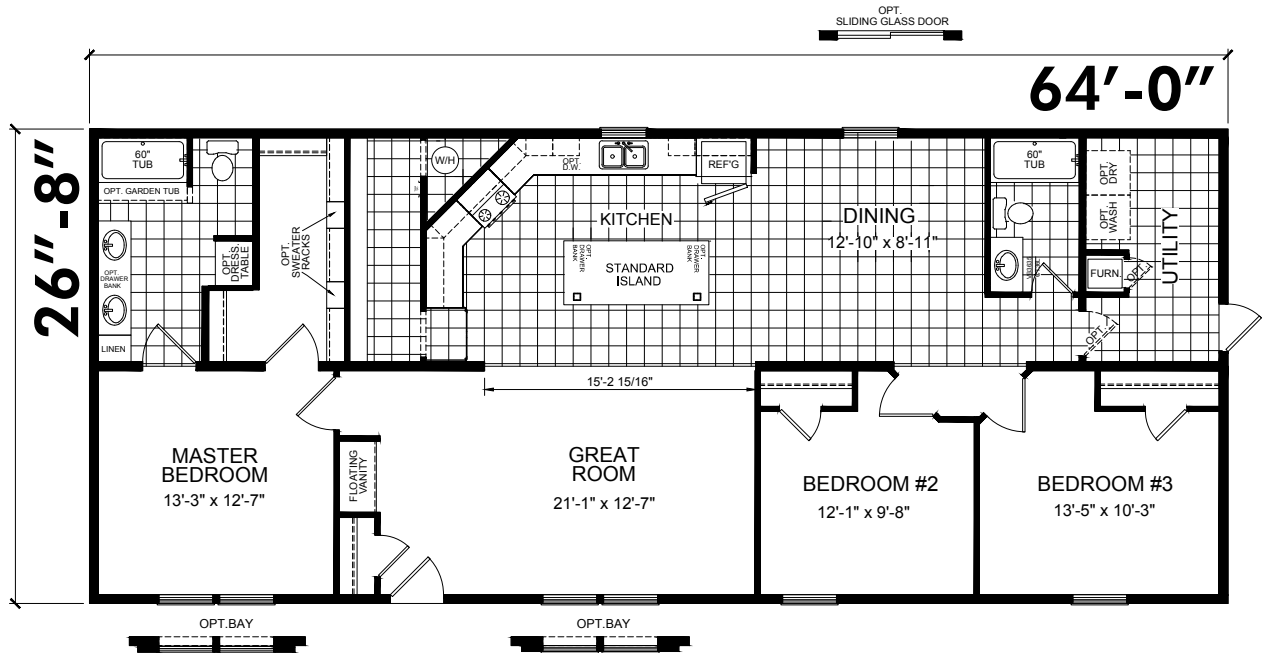


EXTERIOR A



EXTERIOR B

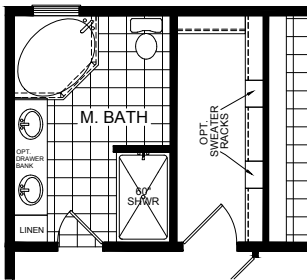
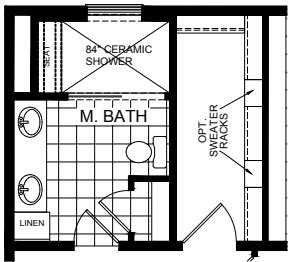
THE RAYSTOWN
FAMILY *of* PLANS



A-26402

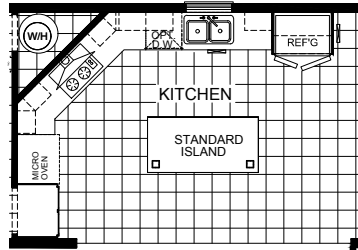
26'-8" x 64'
3 bed-2 bath
1707 sq. ft.

BATHROOMS

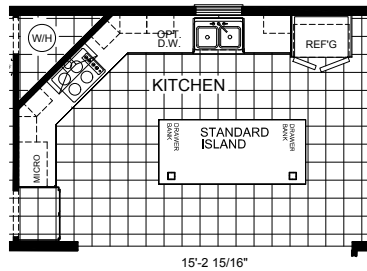


KITCHENS

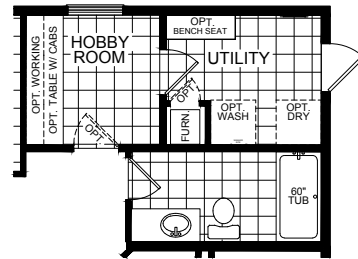
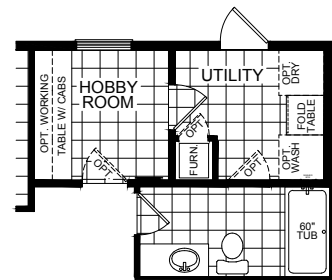
ULTIMATE KITCHEN



ULTIMATE KITCHEN 2



HOBBY/LAUNDRY



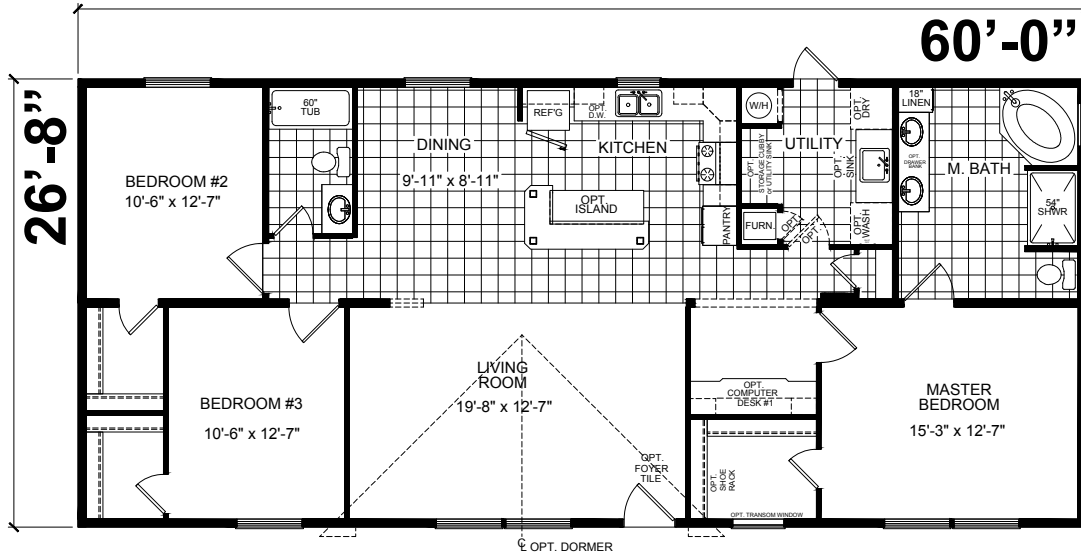
A-26402





A-46026

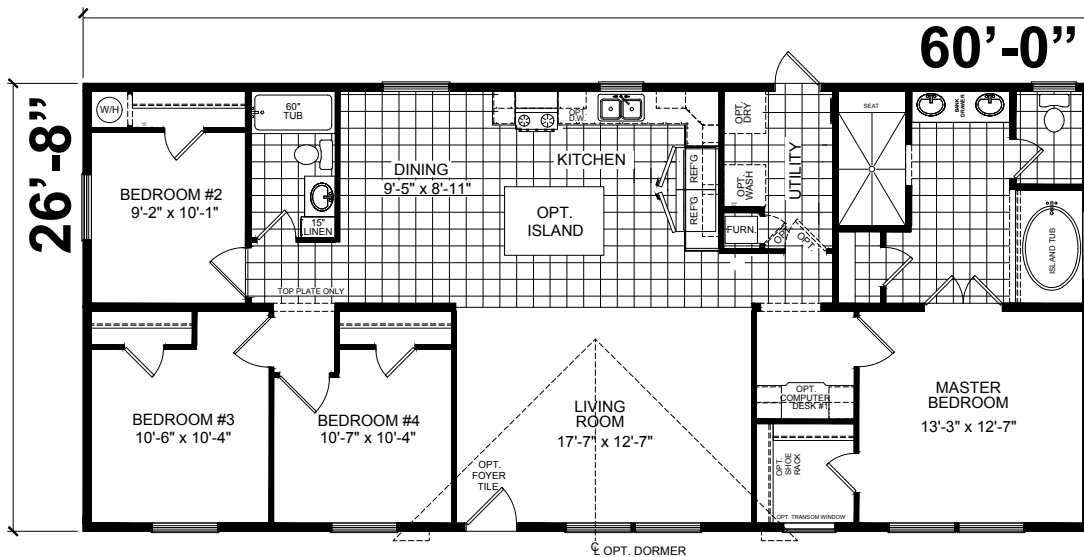
26'-8" x 60'
3 bed-2 bath
1600 sq. ft.



OPTIONS

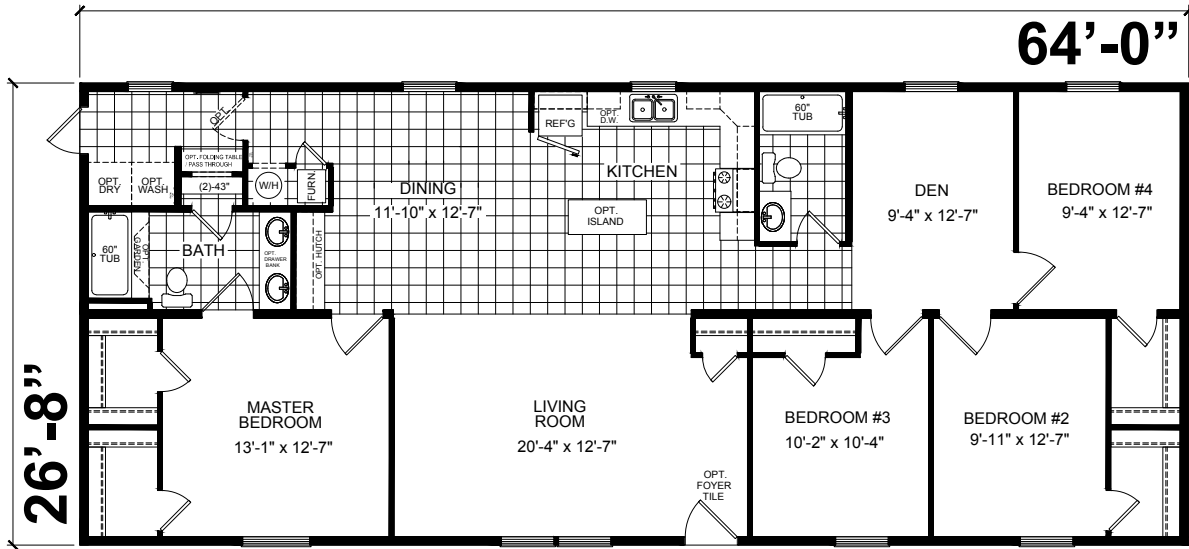
4 bed-2 bath
1600 sq. ft.

OPTIONAL 4 BEDROOM OPTIONAL KITCHEN OPTIONAL CHEF ISLAND OPTIONAL AMAZON BATH



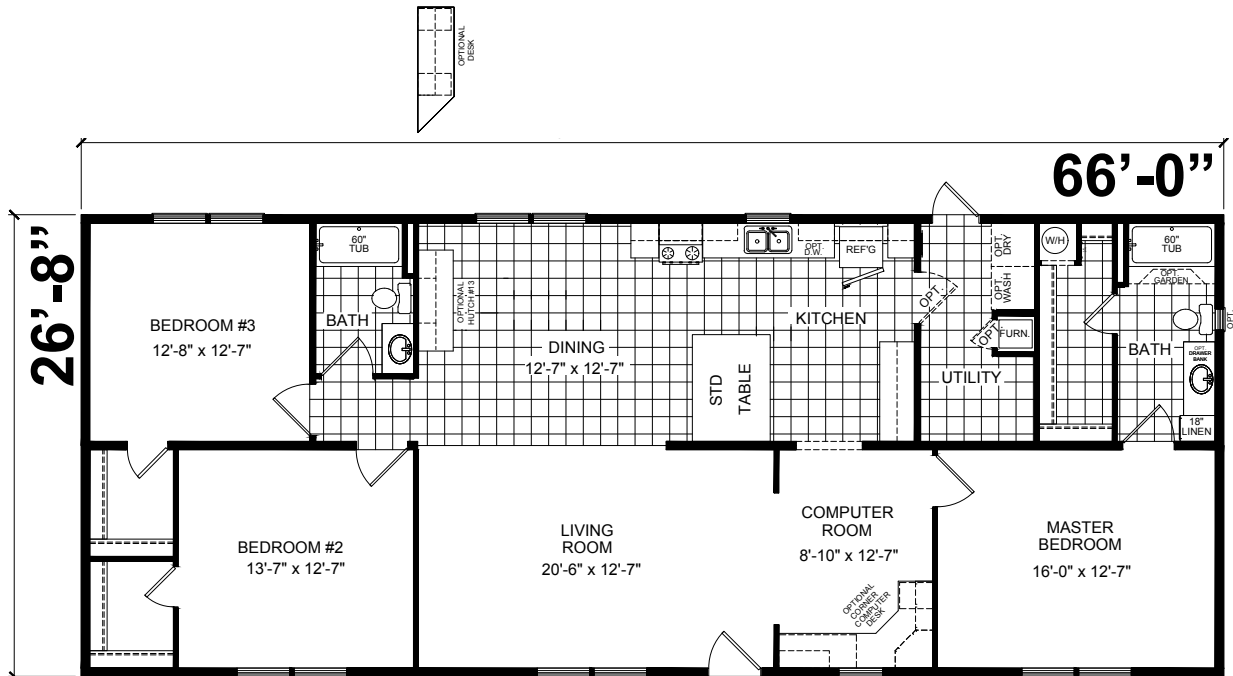
A-46427

26'-8" x 64'
4 bed-2 bath
1707 sq. ft.



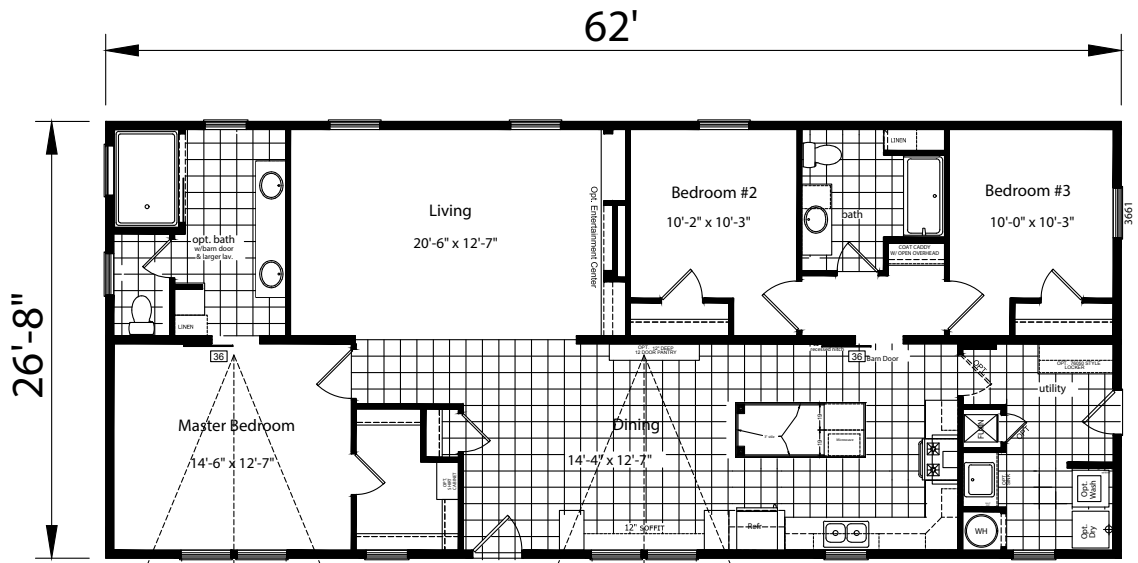
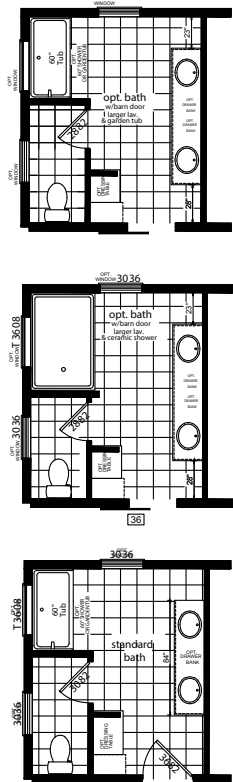
A-26603

26'-8" x 66'
3 bed-2 bath
1760 sq. ft.

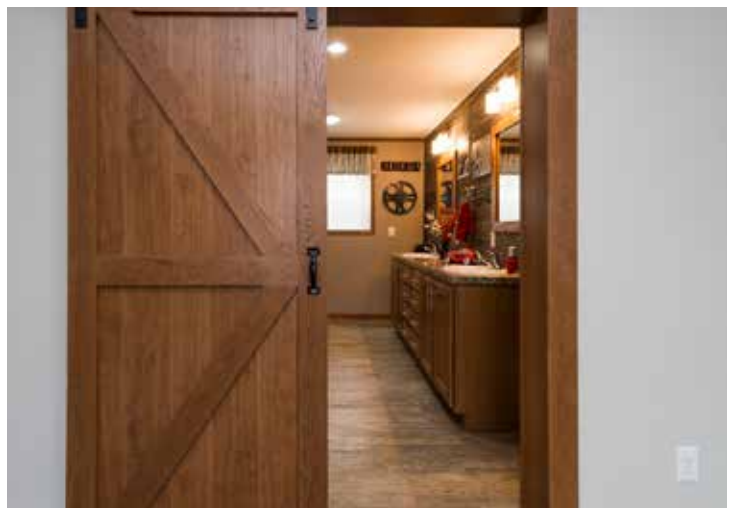


A-26202

26'-8" x 62'
3 bed-2 bath
1653 sq. ft.

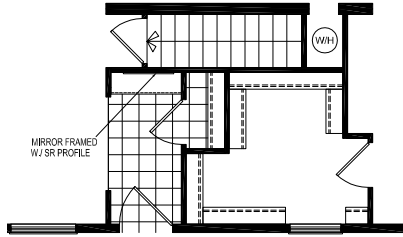


A-26202

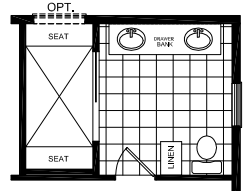
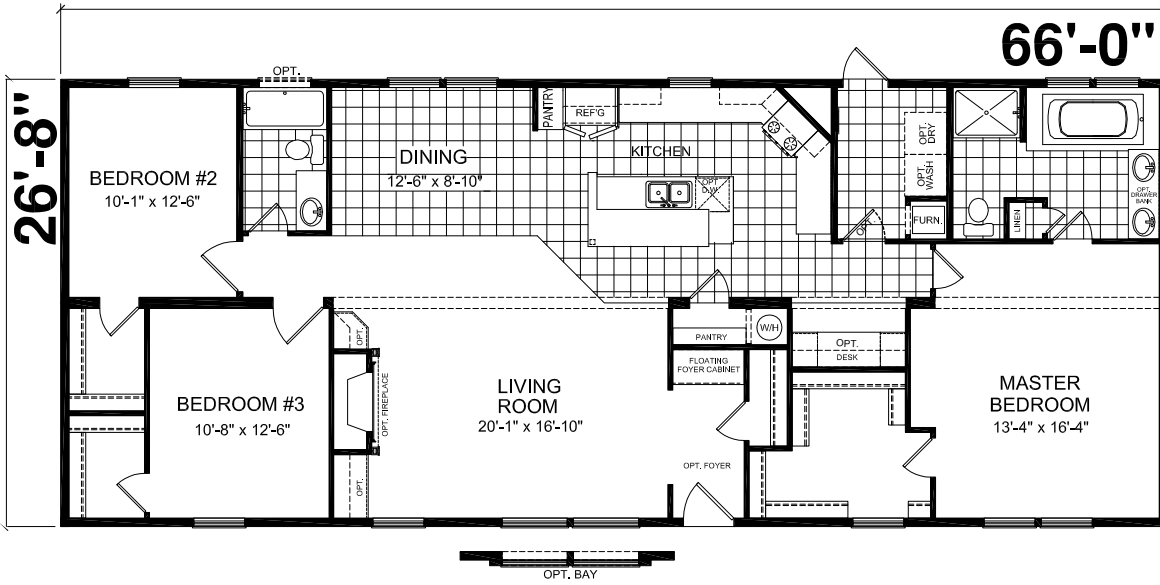


A-76652

26'-8" x 66'
3 bed-2 bath
1760 sq. ft.



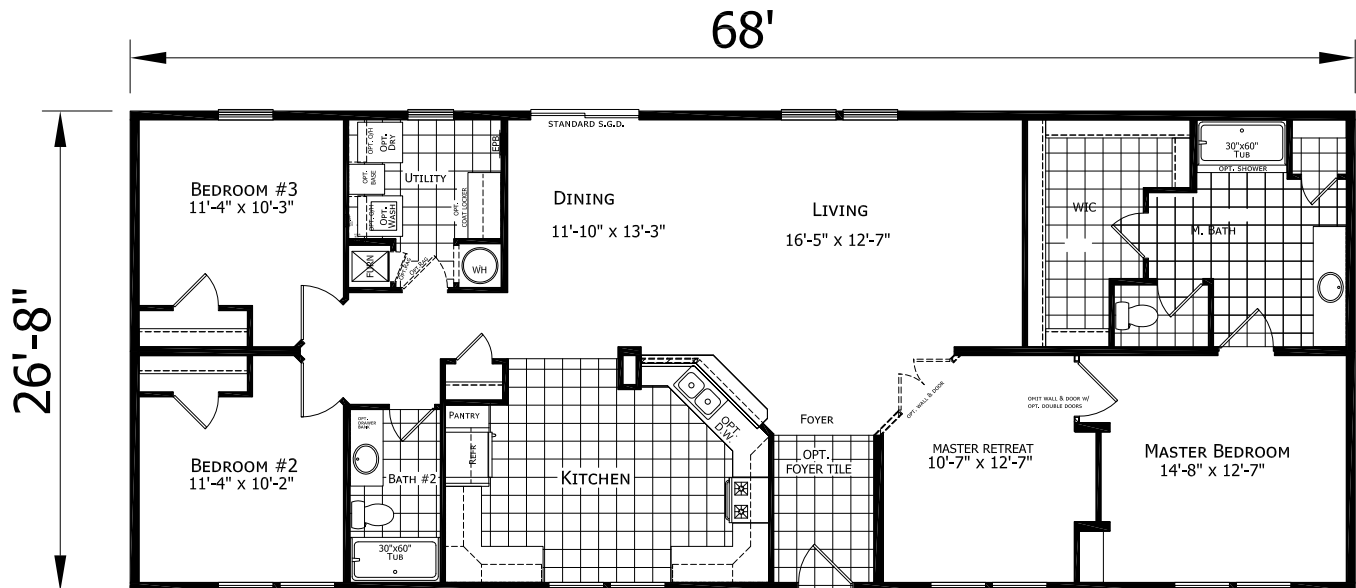
OPT. BASEMENT ENTRY



OPT. MASTER BATH

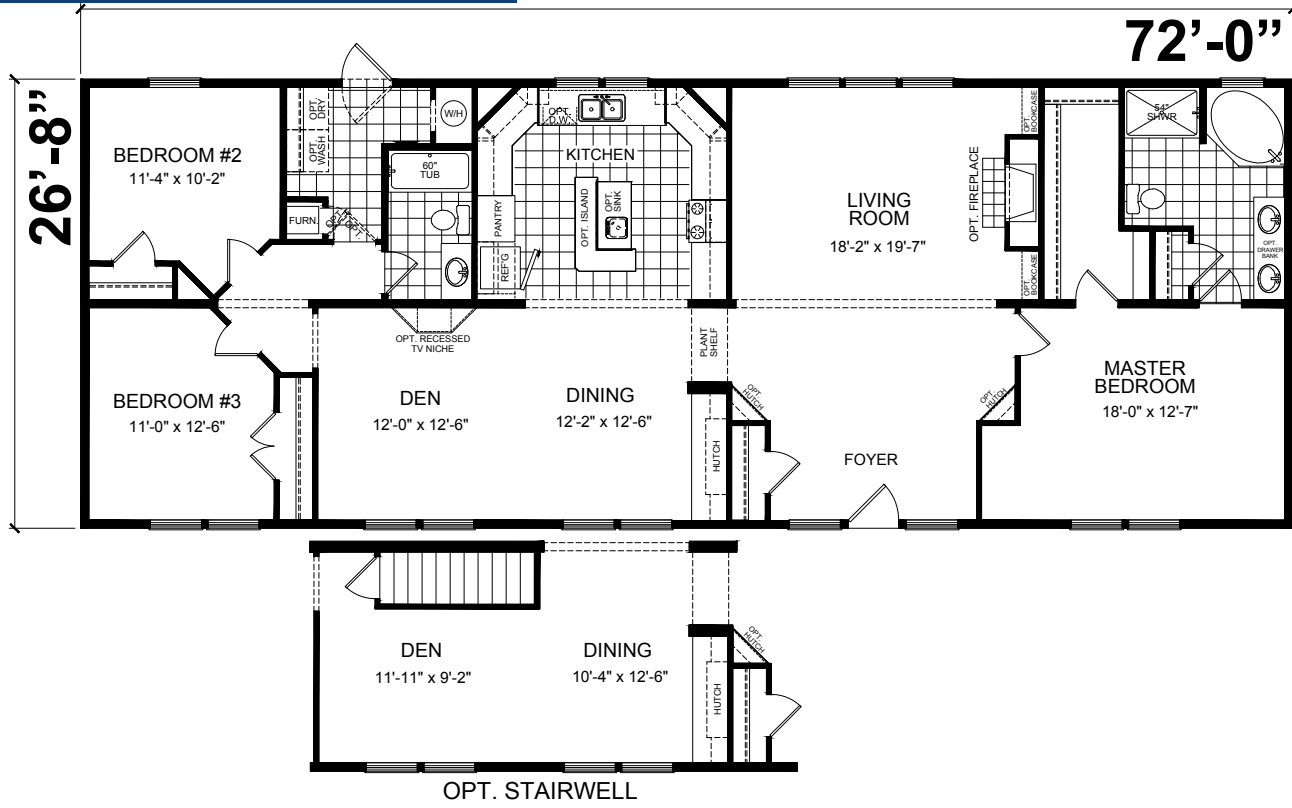
A-26804

26'-8" x 68'
3 bed-2 bath
1813 sq. ft.



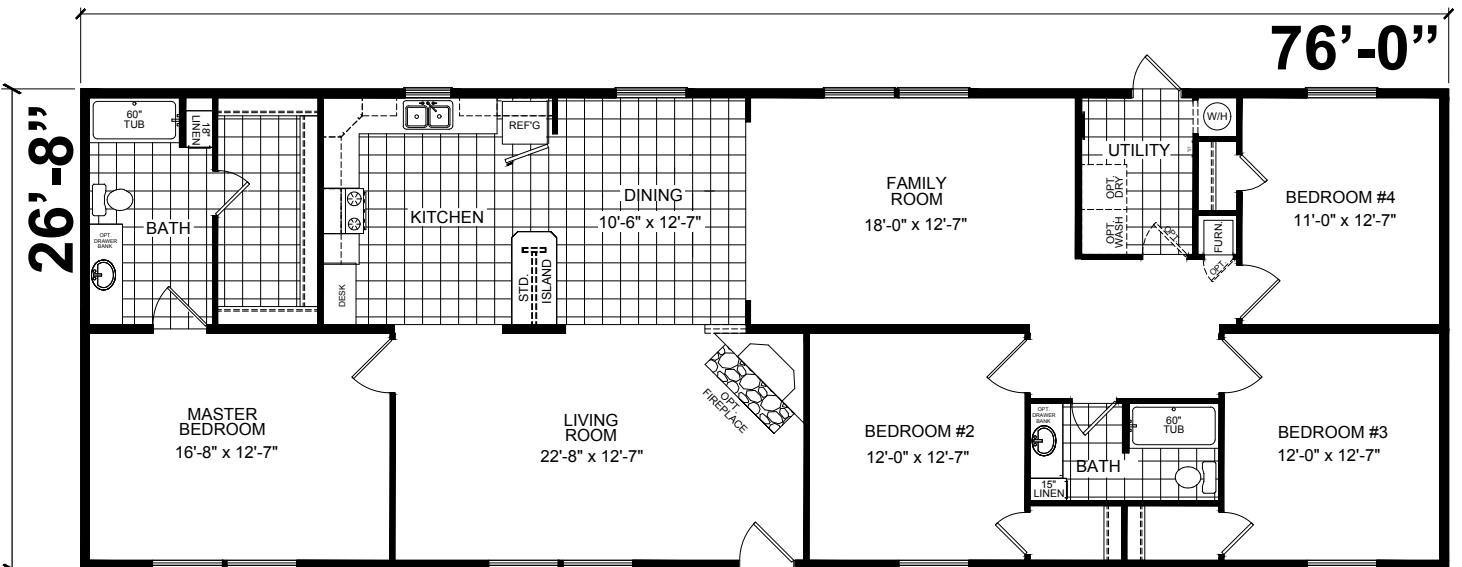
A-27202

26'-8" x 72'
3 bed-2 bath
1920 sq. ft.



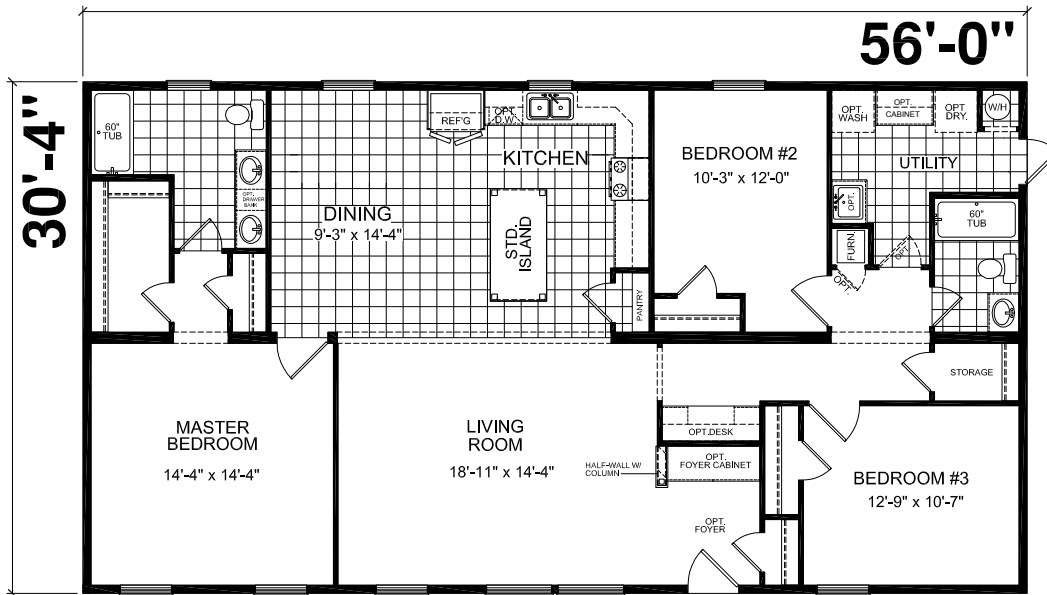
A-27601

26'-8" x 76'
4 bed-2 bath
2027 sq. ft.



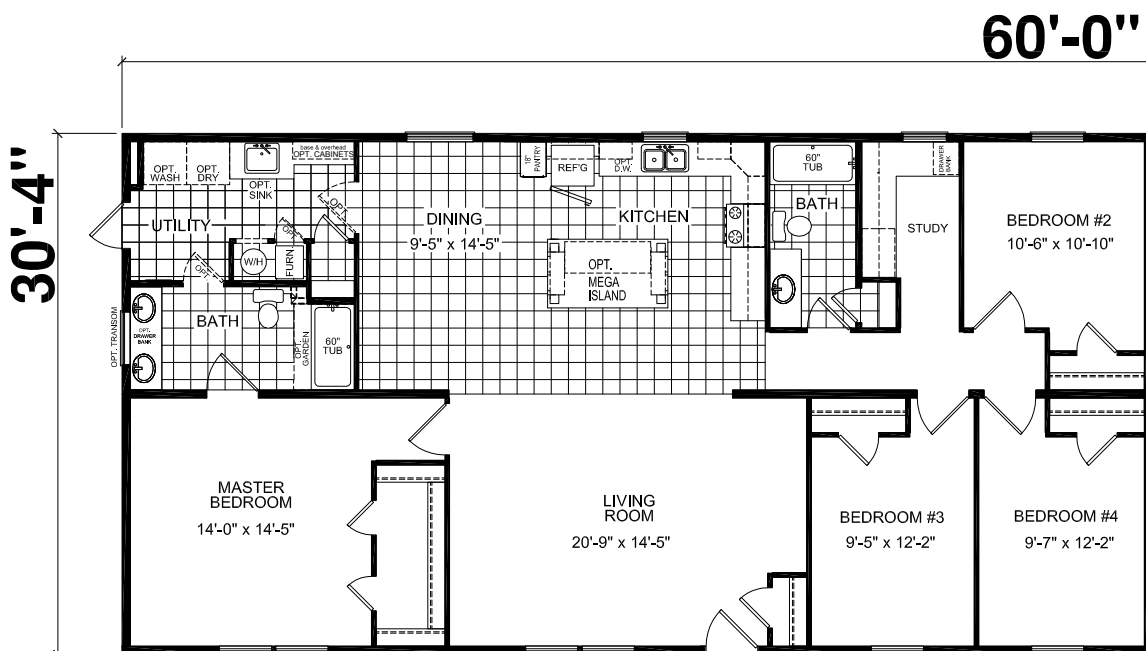
E-75654

30'-4" x 56'
3 bed-2 bath
1699 sq. ft.



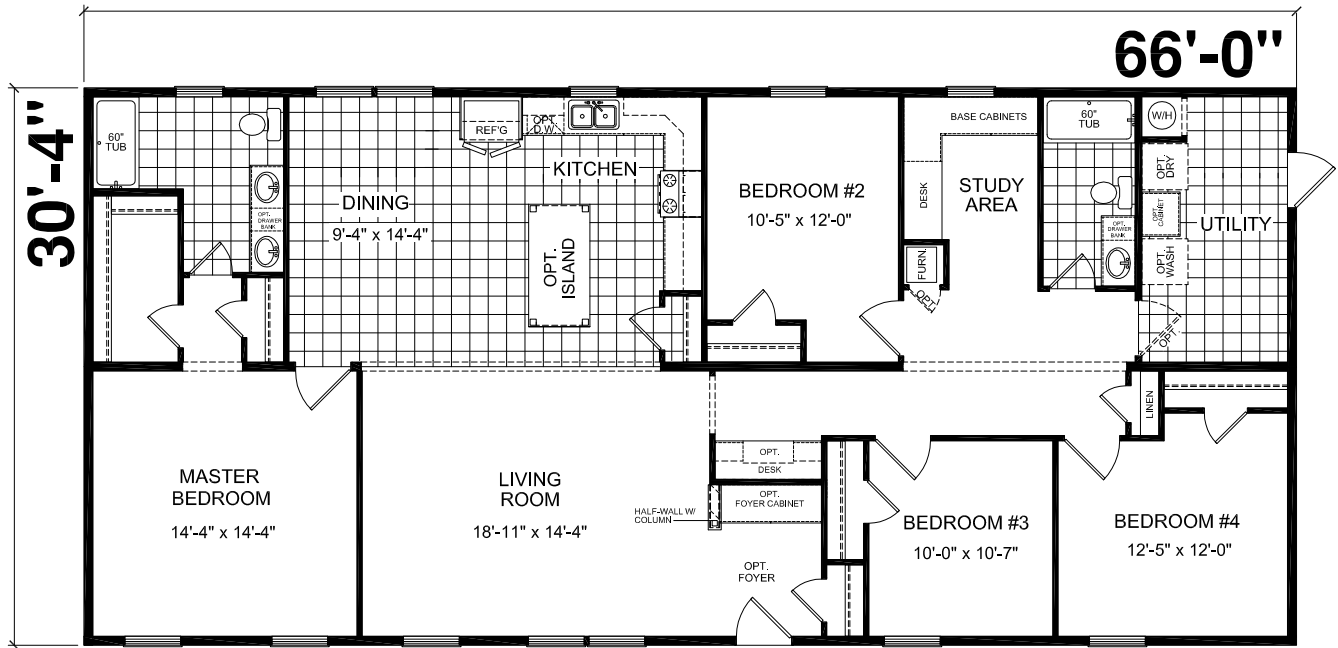
E-46031

30'-4" x 60'
4 bed-2 bath
1820 sq. ft.



E-76654

30'-4" x 66'
4 bed-2 bath
2002 sq. ft.





STANDARD FEATURES

CONSTRUCTION

- 2x6 Floor Joists 16" O.C.
- 2X6 Sidewalls 16" O.C.
- 20 lb. Roof 24" O.C.
- 8' Sidewalls | Flat Stomped Ceilings

**Except where transportation Limitations require 7'6" sidewall with cathedral ceilings.

- Foam Core Sheathing
- Marriage Line Gasket
- Soffit/Fascia/Drip Edge
- Vinyl Covered Drywall Throughout
- Molding to Match Cabinetry Throughout
- Double 4.5" Dutch Lap Vinyl Exterior Siding
- Louvered Panel Shutters FDS
- 3-Tab 25-Year Shingles with Ridge Vent
- Heat Tape Receptacle

ELECTRIC

- 100 Amp Electric Service
- LED Can Light at Kitchen Sink
- LED Can Light in Dining Room
- LED Can Light in Utility Room
- Optional LED Can Lights in Bedrooms
- Vanity Light in Bathrooms
- Switched Receptacles in Living Room & Bedrooms
- Exterior Jar Lights Front & Rear Doors
- Wire & Vent for Electric Dryer

BATHS

- GFI Receptacle
- 60" 1-Piece Tub/Shower
- Dual Knob Faucets
- Towel Bar & Tissue Holders
- 36" Vanity Height | Plastic Sinks
- Mirror at Vanity (s)
- Laminate Countertop & Edge & Backsplash
- Porcelain Toilet
- Curtain Rod at Tub

KITCHEN

- 6" Stainless Steel Kitchen Sink
- 18 Cu Ft Refrigerator - Black
- 30" Deluxe Gas Range - Black
- Power Vent Range Hood
- GFI Receptacle
- Laminate Countertop, Edge & Backsplash
- Wood Cabinet Doors | MDF Stiles
- Bank of Drawers
- Fixed Overhead Shelf
- Cabinet Cove on Overhead cabinets

PLUMBING & HEATING

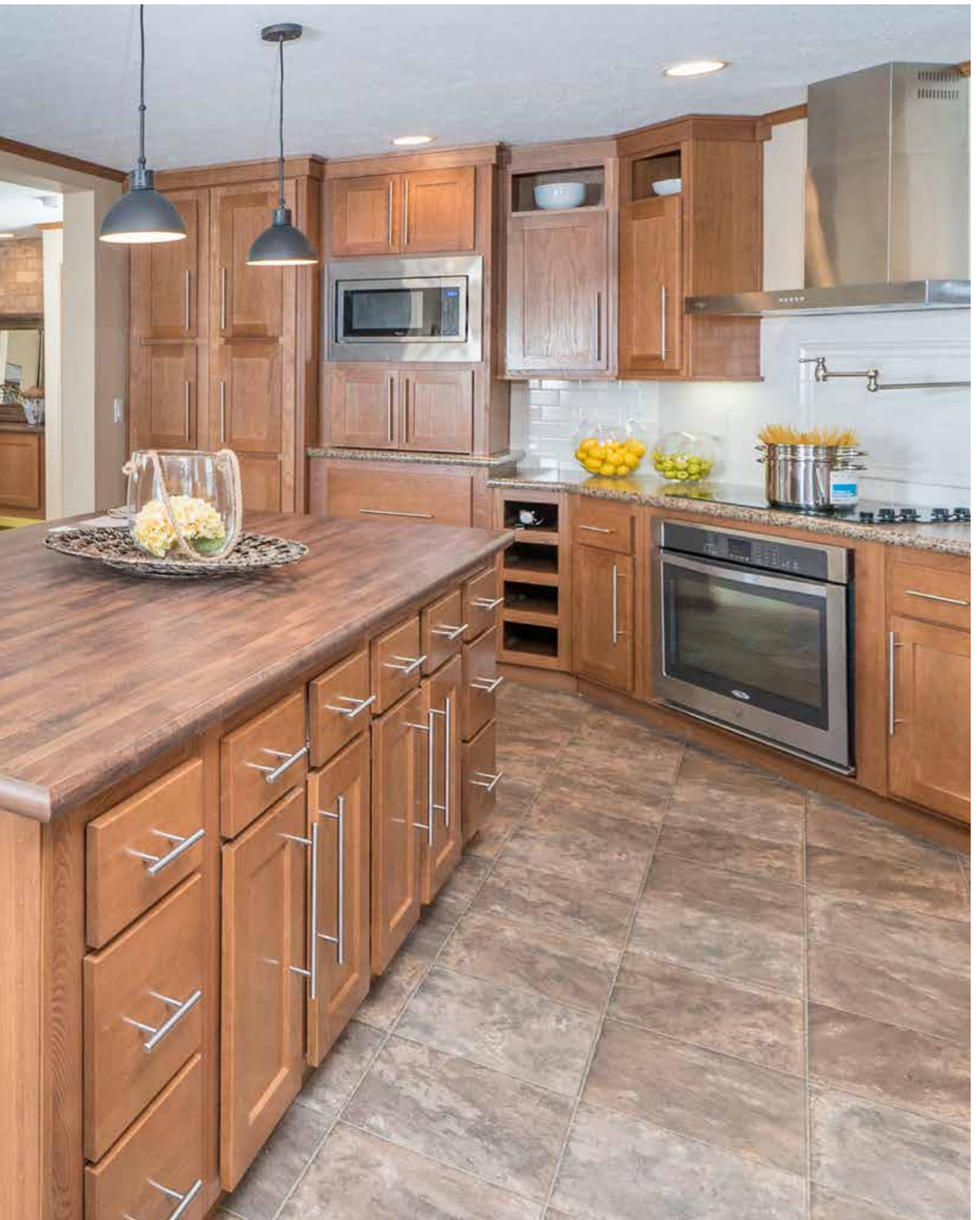
- Whole House Interior Water Shut-Off
- Plumb for Washer
- In-line Heat Ducts
- Gas Furnace with Thermostat
- 30-Gallon Electric Water Heater

MISCELLANEOUS

- Combo Smoke/CO Detectors per Code
- Shaw® Carpet
- Carpet Pad
- Vinyl in Wet Areas
- 2-Panel White Interior Doors with Knobs
- Vented Shelves in Closets
- Wire Shelf over Washer/Dryer Area
- Mini Blinds Throughout
- R-11 Floor Insulation
- R-19 Sidewall Insulation
- R-22 Roof Insulation
- 38" x 82" Sunburst Fiberglass Front Door (No Storm)
- 34" x 82" Cottage Rear Door (No Storm)
- Deadbolts on Exterior Doors (Keyed Alike)
- 36" x 61" & 30" x 36" Low-E Gridded Vinyl Windows per Plan
- Rod with Valance in Kitchen
- Choice of Décor







ATLANTIC[®]
HOMES

2551 Champion Drive
Claysburg, PA 16625

atlantichomespa.com

